



Note: Please use the Home TV device ONLY with the DC power adaptor supplied in the product package. Using another power adaptor will damage the device, and THE GUARANTEE IS VOID.

1 、 Hardware Installation

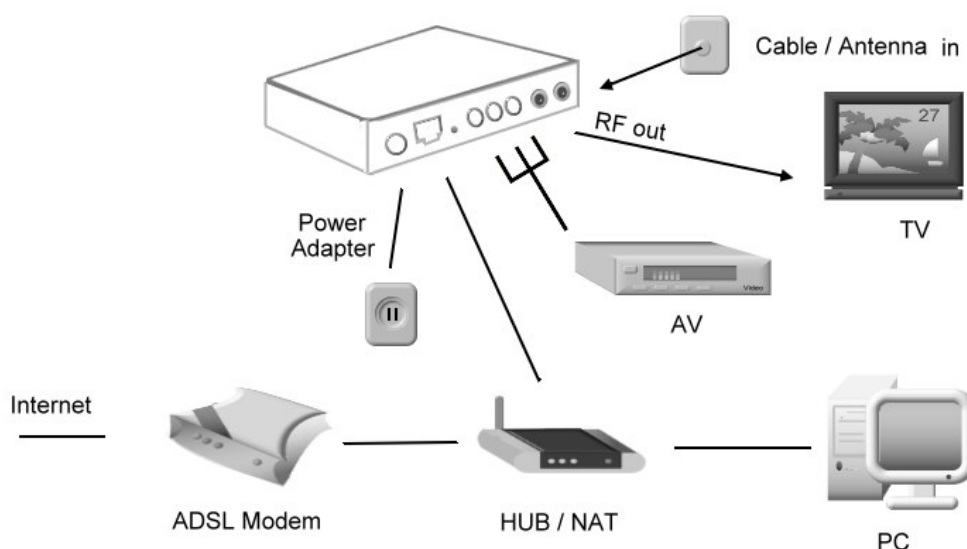


Figure 1-1

2 、 System Setup

Shut down PC firewall program before using SearchTool.exe.

Step 1. Run the SearchTool.exe program.



Figure 2-1

Step 2. Click “Network Config Wizard”

Step 3. Choose “Standard Network Mode: (Quick) “, then

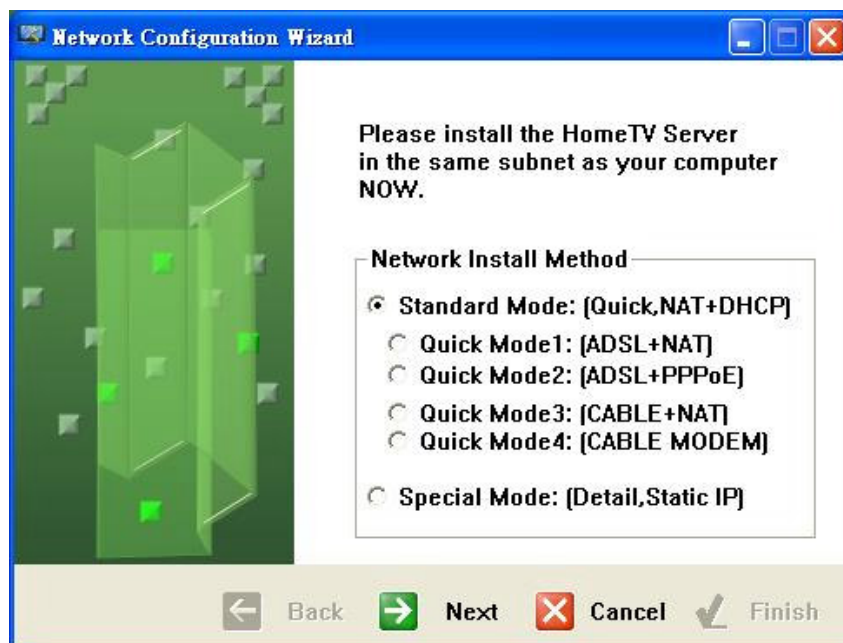
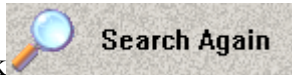



Figure 2-2

Step 4. Here lists all the Home TV found in your LAN. If not found,

click  to repeat the searching step, click on the Home TV you want to set, then 

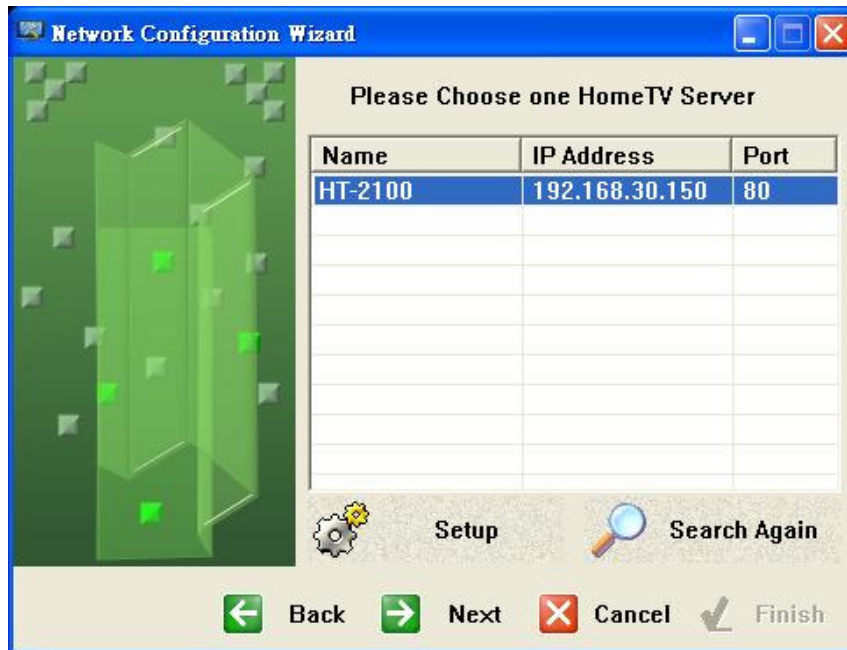



Figure 2-3

- Step 5. Setting DDNS: for floating IP users, if the Home TV you want to connect is not on your LAN, an account in DynDNS and a dynamic domain name shall be applied first, you can refer to Appendix on the User Manual for detailed application process. To make the DDNS operate normally, check the “Turn On DDNS Auto-Update Feature” checkbox first, fill the username (account in your DynDNS) and the password (password in your DynDNS) and the domain name you registered (p.s different Domain Names shall be applied for different Home TVs.). Then 

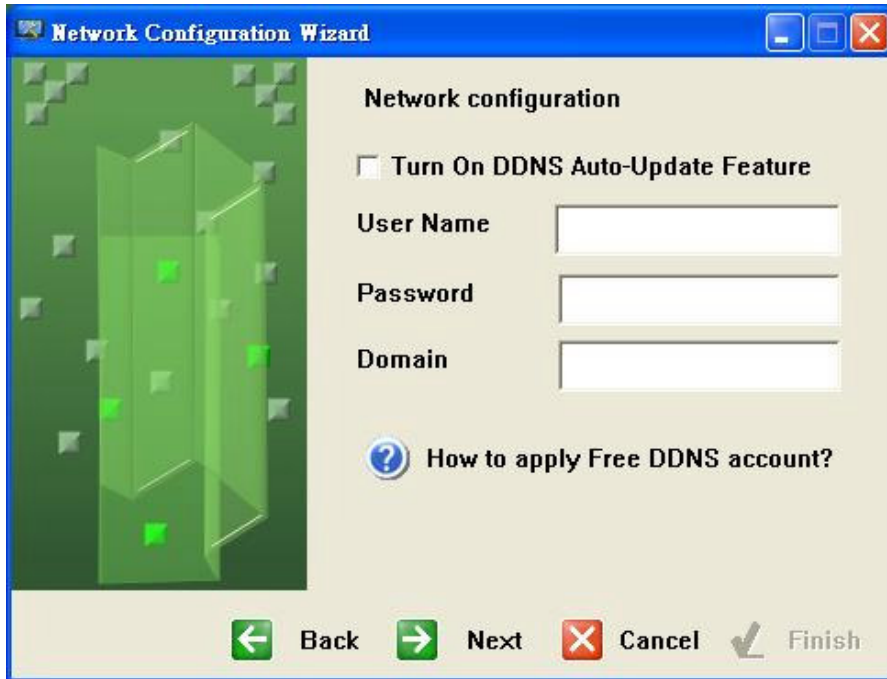



Figure 2-4

Step 6. Check the “Turn On UPnP Port Forwarding Feature” checkbox”.

Then  **Next**.



Figure 2-5

Step 7. Just use default setting, then  **Next**

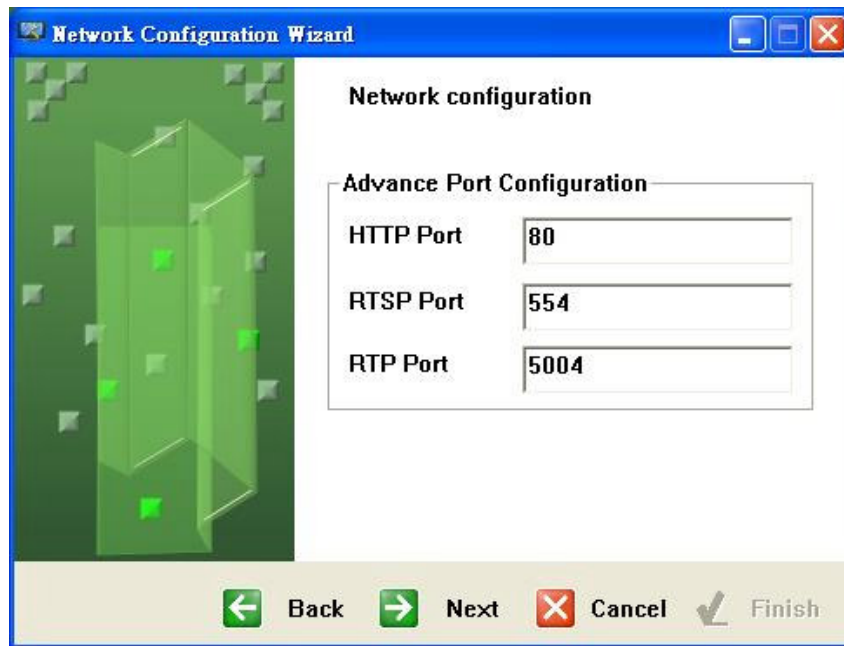


Figure 2-6

Step 8.



Figure 2-7

Step 9. Click



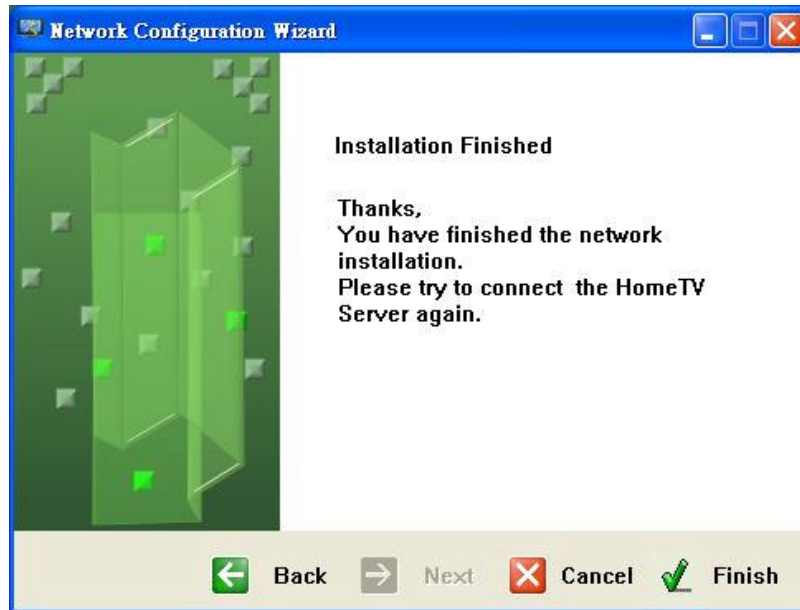
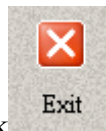


Figure 2-8



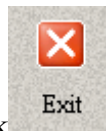
Step 10. Click , to complete the program.



Figure 2-9

3 、 View TV program through Home TV

Step 1. Run HomeTV.exe. It pops up a window, like Figure 3-2.



Figure 3-1



Figure 3-2

Step 2. Click Player/Stream Setting...



Figure 3-3

Step 3. Setting parameters.

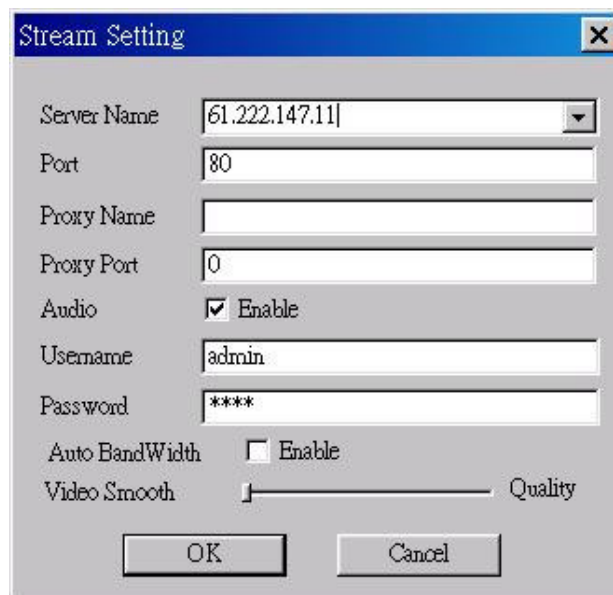



Figure 3-4

- Server Name : Input IP Address of your Home TV or Domain Name, Ex. 192.168.66.176
- Port : Input HTTP Port of Home TV, Ex. 80
- Audio Enable : Check this item, or you cannot hear any voice

- Username : Input your account name in TV Player. Default: admin.
- Password : Input your password in TV Player. Default: admin.
- Auto Bandwidth : Check this item, then system will adjust network transmit speed according to the bandwidth of the network to get optimum effect.

Step 4. When Video zoom set to 200%, click  will pop up a controller, just like your home TV remote controller, like Figure 3-5

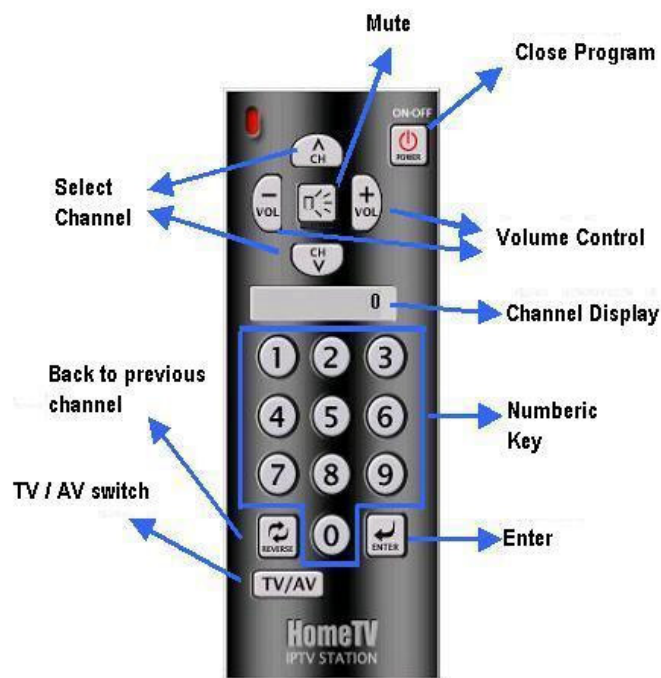





Figure 3-5





1. Channel control

A. input channel number; use numeric key in the controller, then click “Enter” on the controller after input.

B. jump to previous channel, click , jump to next channel, click 

2. Channel transfer : click  will lead you back to previous channel

3. Volume Control : Click  for volume up; Click  for volume down.

4. Mute : Click mute  on the controller will mute the device, and the icon turns to  . Click it again will hear sound again.
5. Video source : click  one time, change video source to AV input; click again change to TV input.
6. Close program : Click  will close the program.

● **Hot Key**

R – Remote Control (Open/Close remote control)

Alt + 1 – Small Screen (original size x 50%)

Alt + 2 – Medium Screen (original size)

Alt + 3 – Large Screen (original size x 200%)

Alt + Enter – Full Screen

Alt + R – Record

Alt + T – TV / AV switch

Ctrl + M – Mute

Ctrl + S – Stream Setting

Ctrl + R – Record Setting

※ Esc – Boss key