

Home TV

Web User Manual

Ver 1.1

Table of Contents:

Chap 1.	Accessing the Home TV.....	1
1-1.	Connect to Home TV	1
1-2.	View Video.....	1
1-3.	User Interface	2
Chap 2.	System setup page	5
2-1.	Live Video (Return to live video window)	5
2-2.	Channels	7
2-3.	Streaming Parameters (in Video subgroup)	7
2-4.	Video Source Adjustment (in Video subgroup)	8
2-5.	Network (in Network subgroup)	9
2-6.	Stream Port (in Network subgroup)	9
2-7.	PPPoE (in Network subgroup)	10
2-8.	DDNS (in Network subgroup)	11
2-9.	Email IP Notification (in Network subgroup)	12
2-10.	Users (in Administration subgroup)	12
2-11.	Device/Reboot (in Administration subgroup)	13
2-12.	Upgrade (in Administration subgroup)	14
2-13.	OSD (in Surveillance subgroup)	15
2-14.	Event (in Surveillance subgroup)	15
2-15.	Event Schedule (in Surveillance subgroup)	16
2-16.	Motion Detect (in Surveillance subgroup)	17
2-17.	SMTP (in Surveillance subgroup)	17
2-18.	SMS (in Surveillance subgroup)	18
2-19.	FTP (in Surveillance subgroup)	19
2-20.	System Info.....	20

Chap 1. Accessing the Home TV

1-1. Connect to Home TV

- i. Input IP Address/ Domain of Home TV's in the URL field of IE browser.
- ii. Input user name and password

The default user name and password are:

user name: admin
password : admin

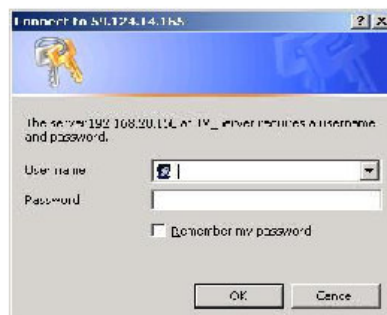


Figure 1-1

1-2. View Video

If connected correctly and everything is right, you can view the video in IE browser. The Video will show on the right side. The Controller panel will show on the left side of IE browser.



Figure 1-2

1-3. User Interface

I、Controller

Controller is situated on the left part shown as Figure 1-3.

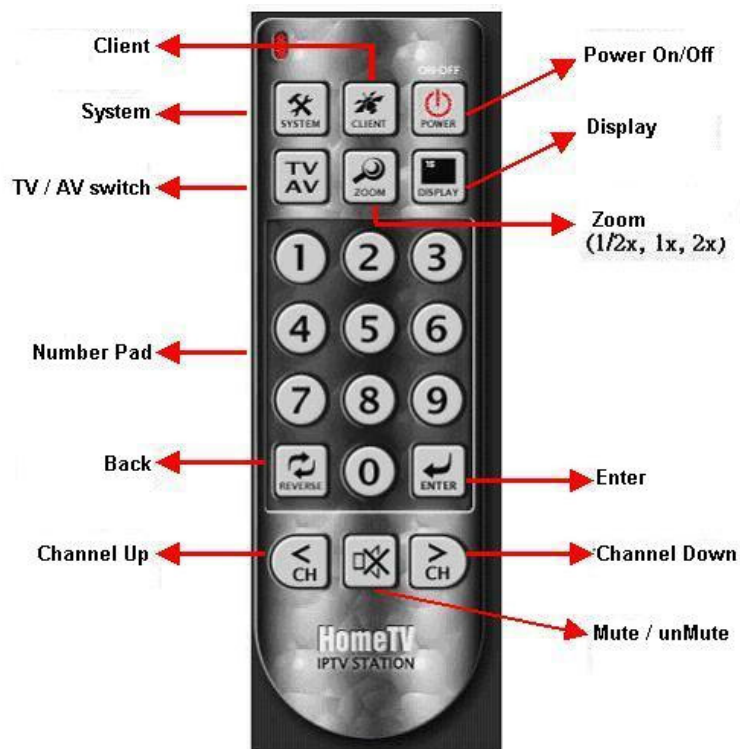


Figure 1-3 Controller

User can control the HOME TV through Controller; for example, we can press the “Channel UP” button, “Channel Down” button, or enter channel number directly.

Item	Button	Meaning
1	Power On/Off	Home TV Power On/Off
2	Mute	Mute / unMute
3	Display	Display channel number
4	TV/AV	Video Source: TV or AV
5	Client	Set the configuration in client side
6	Zoom	There are 3 kinds of display window, see below for detail
7	0~9 / enter	Enter Channel Number
8	System	Go to System Setup Page
9	Back	Back to previous channel

Table 1-1

II、Display window

Home TV has 3 kinds of display window: large, small, and mobile. Press “Zoom” button will change it alternately. For example, small size, as in Figure 1-4, large size in Figure 1-5, mobile size in Figure 1-6.



Figure 1-4 Small Size



Figure 1-5 Large Size

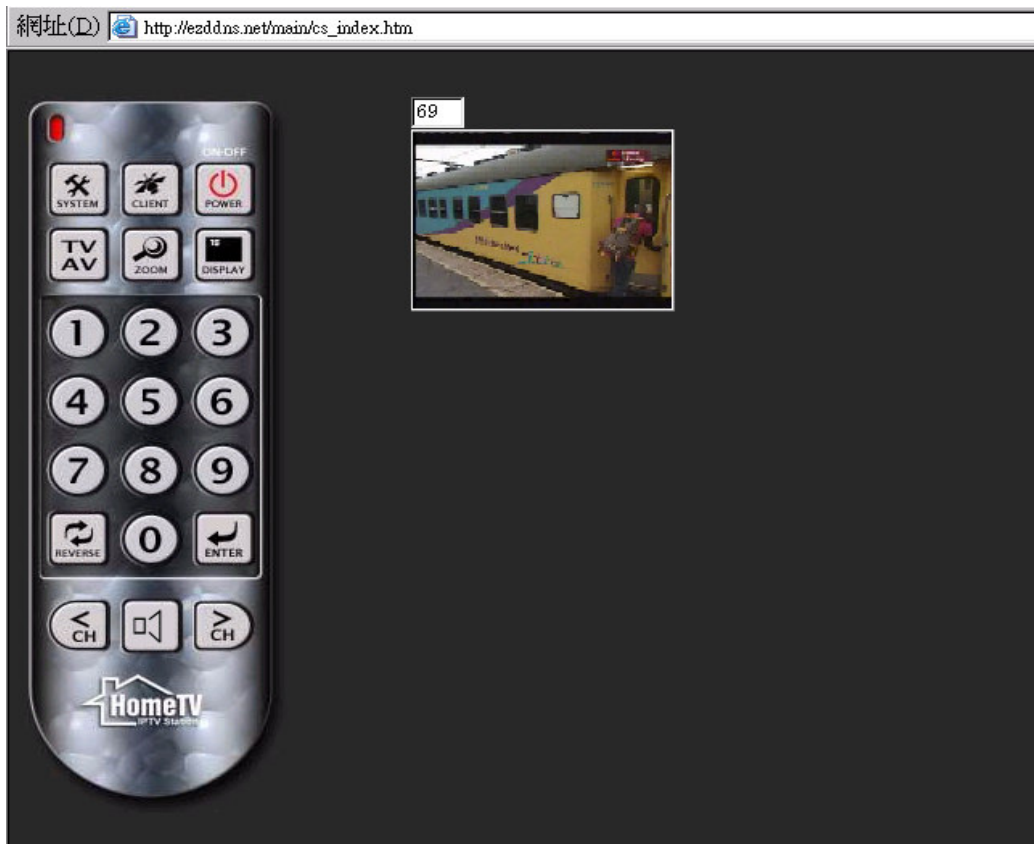


Figure 1-6 Mobile Size

Chap 2. System setup page

Click “system” in controller (Figure 2.1), will lead us to the System setup page (Figure 2.2).



Figure 2-1

<ul style="list-style-type: none"> Live Video Channels Video Network Administration Surveillance Notification System Info 	<p>System Status:</p> <p>Network Information:</p> <p>IP Address : 192.168.1.7 PPP IP Address : 0.0.0.0 Subnet Mask : 255.255.255.0 Gateway : 192.168.1.1 MAC Address : 00-12-0e-59-be-79</p> <p>Streaming Setting:</p> <p>Video Setting: Frame Rate : 30.00 Bit Rate : 1024 Frame Size : SMALL</p> <p>Audio Setting:</p> <p>Audio Codec : <input type="text" value="AMR 12.2kbps"/></p>	<p>Device Information:</p> <p>Firmware Ver. : 1,0,0,2 -1 client(s) Hardware Ver. : r0e/r 3.4_32 - PN Build Number. : r237-IPTV-3G-(0) (Dec 5 2007 21:23:58)</p> <p>System Information:</p> <p>System up: System up 2:20:15:3 Client IP(s): <input type="text" value="IP [1]: No Connection"/></p> <p>Connected Clients: 0</p>
---	---	--

Figure 2-2

2-1. Live Video (Return to live video window)



Figure 2-3

If connected correctly, "Live Video" will show TV program or AV image. If source is TV, then TV program will appear in the right part of IE browser, if source is AV (like DVD, camera, etc.), its image will appear in the right part of IE browser.

2-2. Channels

Channels Setting:

- Range : 55250KHz - 801250KHz

Restore :

Auto Search : **Region** : American Samoa
Search Mode : Fast
Sensitive : High

Manual Setting : **Channel** : 1 Replace
Frequency : KHz

Figure 2-4

Restore Default Channels: Back to default Channels

Auto Search Channels: Automatic to search by region you selected

Check current channels: Set channel frequency by manual

2-3. Streaming Parameters (in Video subgroup)

Streaming Parameters:

- Streaming setup, the parameters are used to configure streaming server.

Video Setting:

Bit Rate : 1024 Kbps Choose one
Frame Rate : 30 fps
Frame Size : SMALL Size
Key Frame : 2 Seconds
Channel Bandwidth : 0 Kbps Choose one

User defined Mobile Video Setting:

Bit Rate : 384 Kbps Choose one
Frame Rate : 30 fps
Frame Size : MOBILE Size
Key Frame : 2 Seconds
Channel Bandwidth : 128 Kbps Choose one

Audio Setting:

Mode : AMR 12.2kbps

Figure 2-5

Video Settings (Ex. Bit Rate, Frame Rate, Frame Size, Key Frame, Channel Bandwidth) can be adjusted for user need.

- Frame Rate : Original Frame Rate per second
- Bit Rate : Original Data Transmit Rate per second (K bits)
- Frame Size : Frame Size, differentiated by small, medium, large, and mobile video.
- Key Frame : Time between two key frames
- Channel Bandwidth : Real Bandwidth of Data Transmit (kbps), 0 is without limit.

2-4. Video Source Adjustment (in Video subgroup)

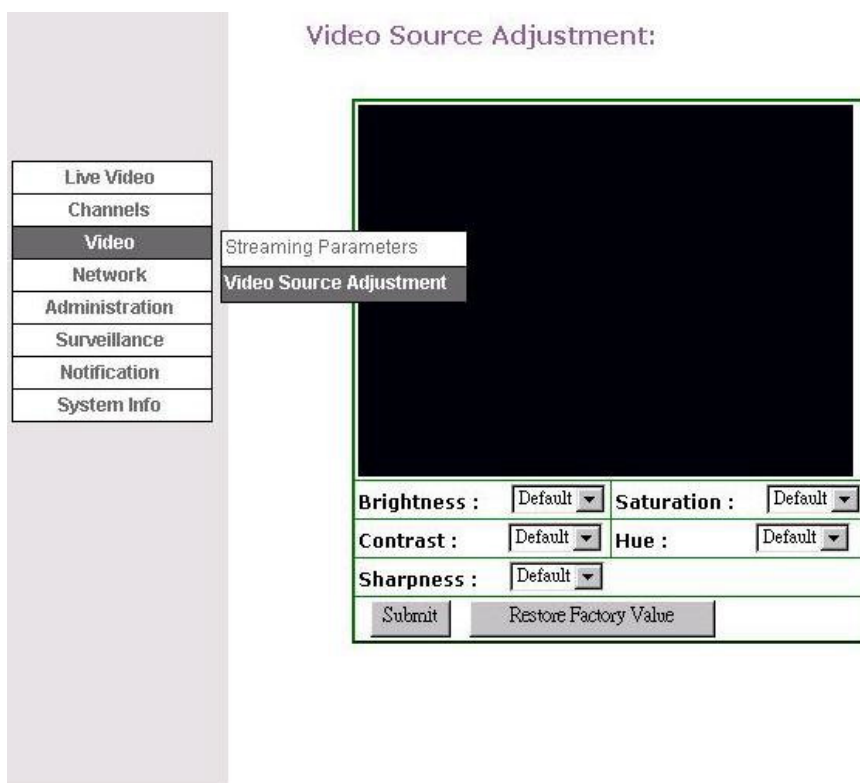


Figure 2-6

Video related parameters, such as Brightness, Saturation, Contrast, Hue, and Sharpness. User can change these items if needed.

2-5. Network (in Network subgroup)

DHCP/Fixed IP Mode:

- When using DHCP mode, please select DHCP to "ON".
- When using Fixed IP mode, please select DHCP to "OFF" and fill the values in the fixed IP mode fields.

DHCP client :

Fixed IP mode :

IP Address	: 192	: 168	: 66	: 6
Subnet Mask	: 255	: 255	: 255	: 0
Gateway	: 192	: 168	: 66	: 254
Domain Name Server 1	: 168	: 95	: 1	: 1
Domain Name Server 2	: 168	: 95	: 192	: 1

Enable UPnP port forwarding :

Figure 2-7

If local network has a DHCP server, DHCP server can dynamically give the Home TV one floating IP Address, you can ask MIS administrator to acquire the detail. When using DHCP mode, please select DHCP to "ON". When using Fixed IP mode, please select DHCP to "OFF" and fill the values in the fixed IP mode fields. The default IP Address is 192.168.66.6. Should have any question, you can ask MIS administrator.

DHCP client : Turn ON/OFF DHCP function.

2-6. Stream Port (in Network subgroup)

Streaming Ports Setting:

- Setting of the streaming ports, the parameters here are used in starting streaming server.

Stream Setting:

Http Port1	: 80
Http Port2	: 80
Rtsp Port	: 554
Rtp Port	: 5004

Figure 2-8

Two HTTP (Hypertext Transfer Protocol) port, RTSP (Real Time Streaming Protocol) Port and RTP (Real Time Transport Protocol) Port,
 HTTP Port1 : The port used by HTTP protocol.

- HTTP Port2 : The port used by HTTP protocol.
- RTSP Port : The port used by RTSP. Default is 554
- RTP Port : The first port used by RTP. Default is 5004 (5004~5043).

2-7. PPPoE (in Network subgroup)

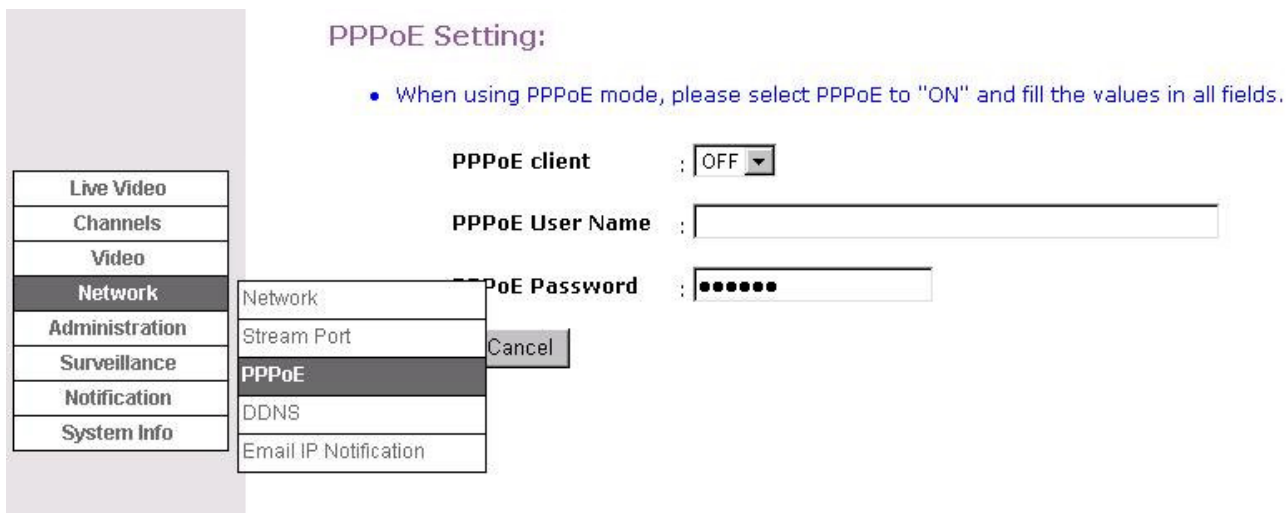


Figure 2-9

PPPoE Stands for “Point To Point Protocol Over Ethernet”. This machine can connect to Internet through PPPoE protocol. When using PPPoE mode, please select PPPoE to "ON" and fill the values in User Name and Password fields. Ask your ISP Provider to acquire User Name and Password data field.

- PPPoE client : ON/OFF PPPoE function.
- PPPoE User Name : PPPoE user account.
- PPPoE Password : PPPoE user password.

2-8. DDNS (in Network subgroup)

DDNS Mode:

- When using DDNS mode, please select DDNS to "ON" and fill the values in all fields.

DDNS Client : OFF

DDNS Service Provider : DynDNS Dynamic DNS Service

DDNS User Name :

DDNS Password :

DDNS Domain :

DDNS Assign IP : Enable

Submit Cancel

Figure 2-10

DDNS stands for “Dynamic Domain Name Server Service”; this machine provides DynDNS Dynamic DNS Service. You must apply and enroll in the following website before you can use it: <http://www.dyndns.org>.

When using DDNS mode, please select DDNS to "ON" and fill the values in all fields.

DDNS Domain : Domain when you apply and enroll DDNS.

DDNS Assign IP : Check “Enable” if you want to use present IP of HOME TV. If HOME TV is under a NAT network, please uncheck it.

2-9. Email IP Notification (in Network subgroup)

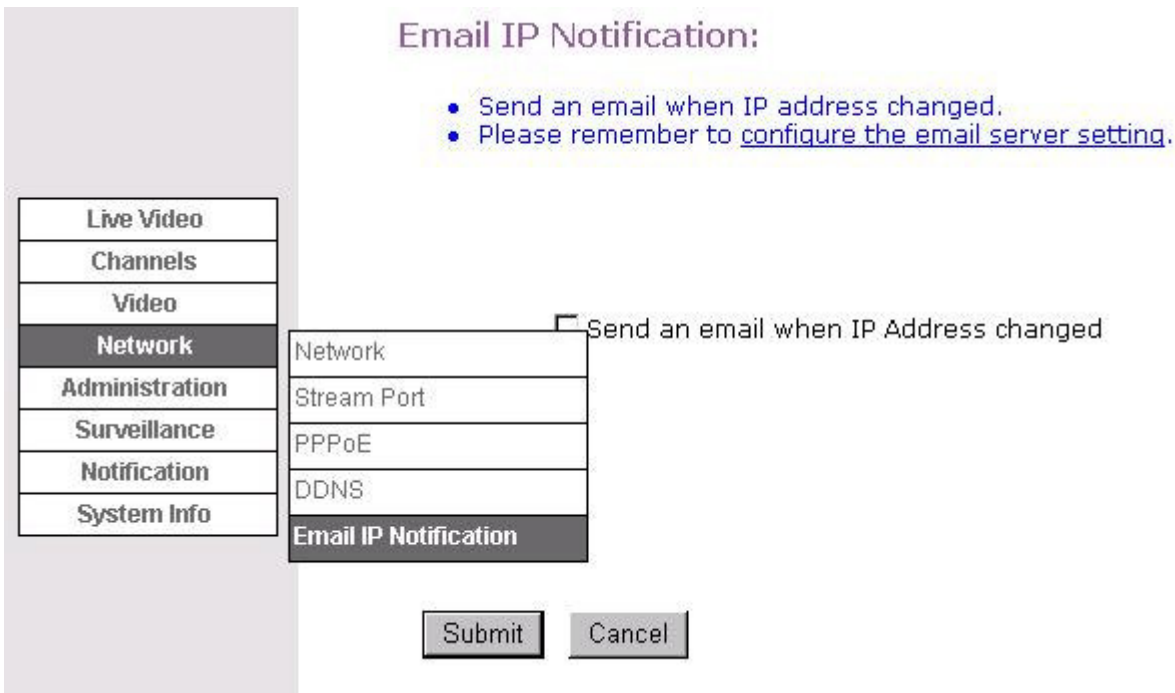


Figure 2-11

Send an email when IP address changed: Server will send an email when your IP changed.

2-10. Users (in Administration subgroup)

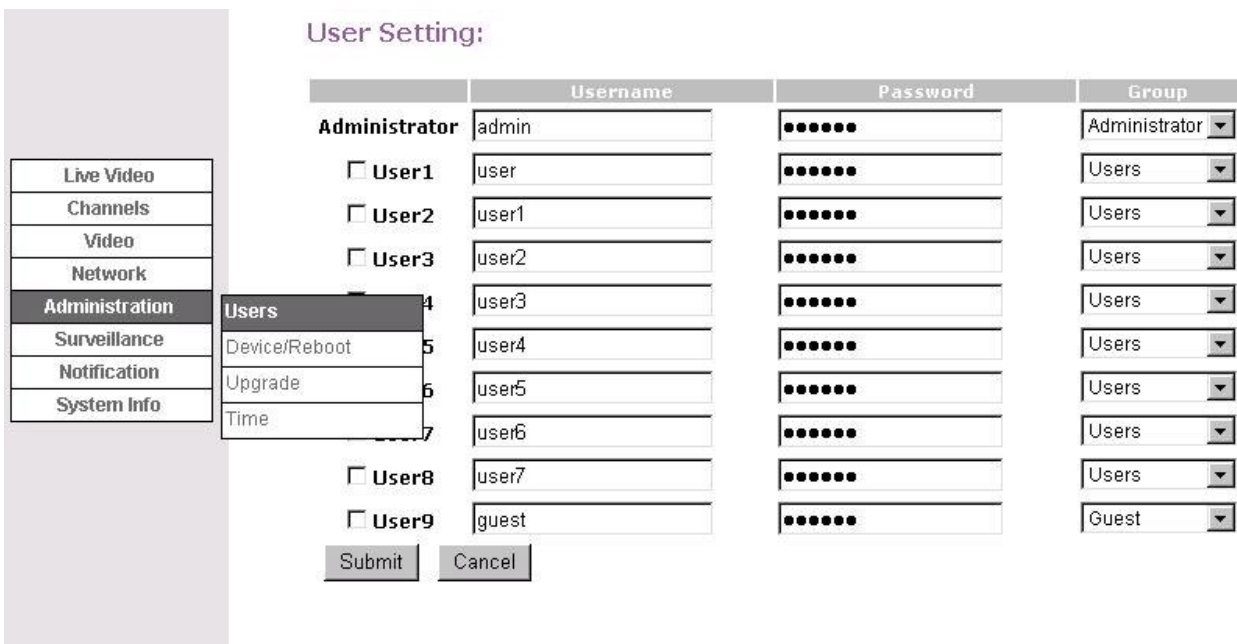


Figure 2-12

You can set 10 user settings (including Administrator) at most. Fill the Username and Password, set the Group (Administrator, Users, Guest). Use “Group” to set user’s power.

- Administrator : Supervisor can setup system parameters, channel number; view TV video
- Users : Has right to select channel and view TV program.
- Guest : View TV program only.

Note: You must check the user in first column if you want to enable that user; uncheck it if you want to disable that user.

Please REBOOT Home TV after you change the user related configurations.

2-11. Device/Reboot (in Administration subgroup)

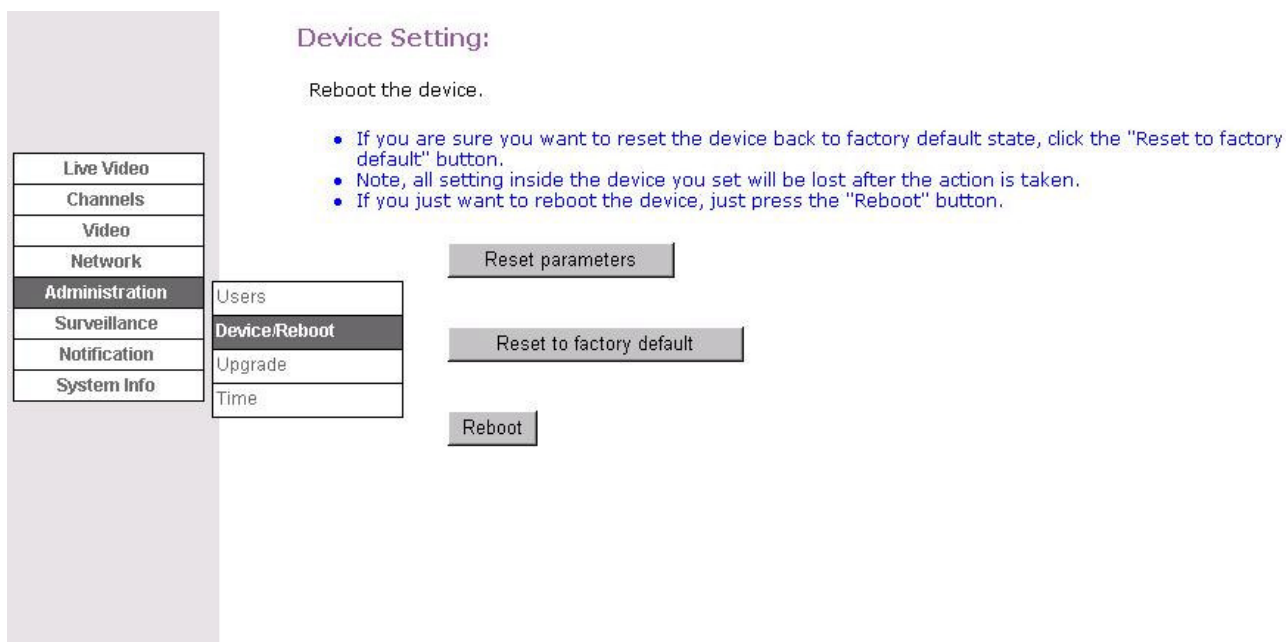


Figure 2-13

- (a) If default video setting is requested, “Reset parameter” is checked.
- (b) If you are sure you want to reset the device back to factory default state, check the “Reset to factory default” checkbox and then press the **Submit** button.
(Note, all setting inside the device you set will be lost after the action is taken.)
- (c) If you just want to reboot the device, then uncheck these two checkboxes and just press the **Submit** button.

2-12. Upgrade (in Administration subgroup)

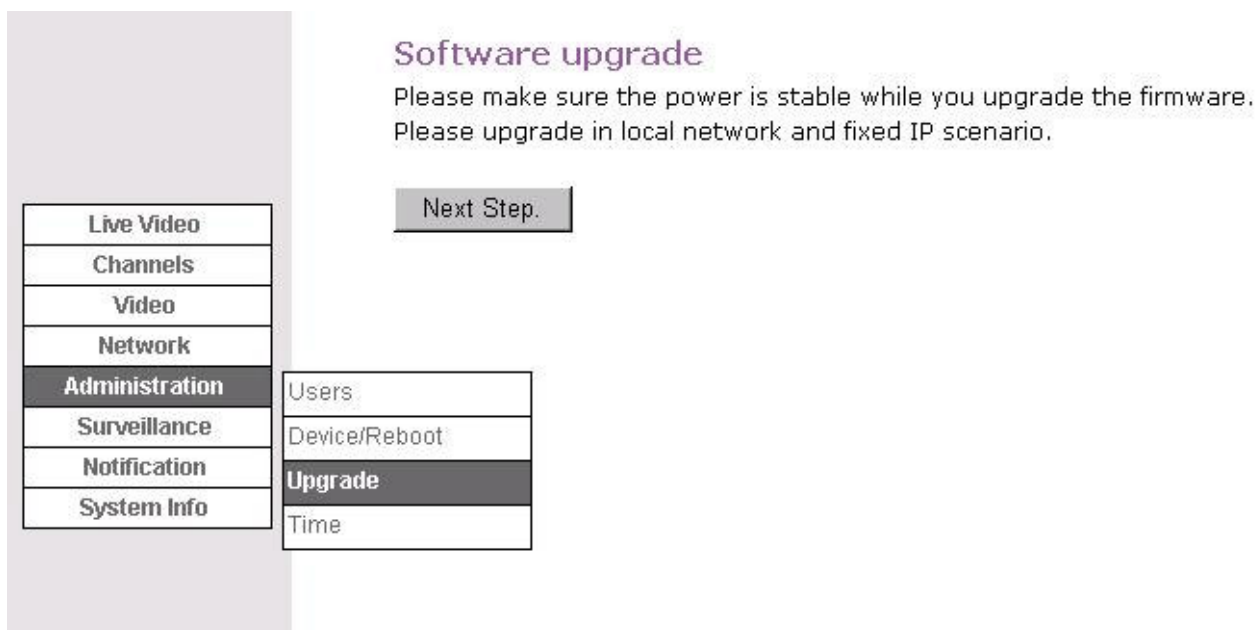


Figure 2-14

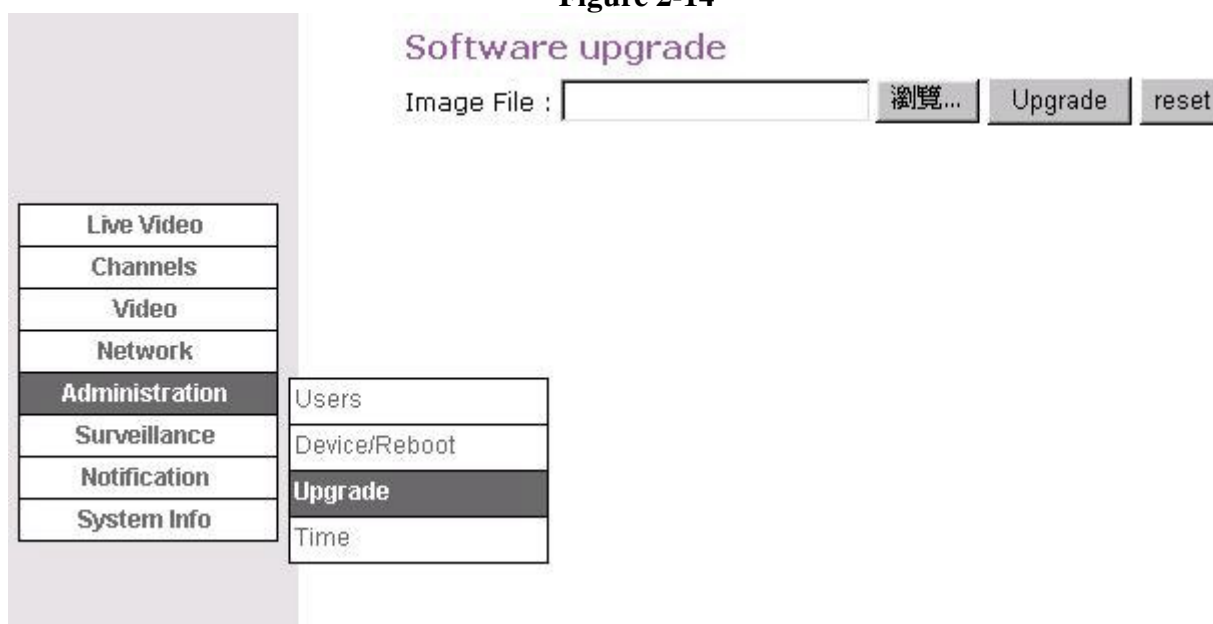


Figure 2-15

Upgrade the firmware of the Home TV. Press **Browse** Button, then choose the upgrade image file, and then press **Upgrade** button.

2-13. OSD (in Surveillance subgroup)

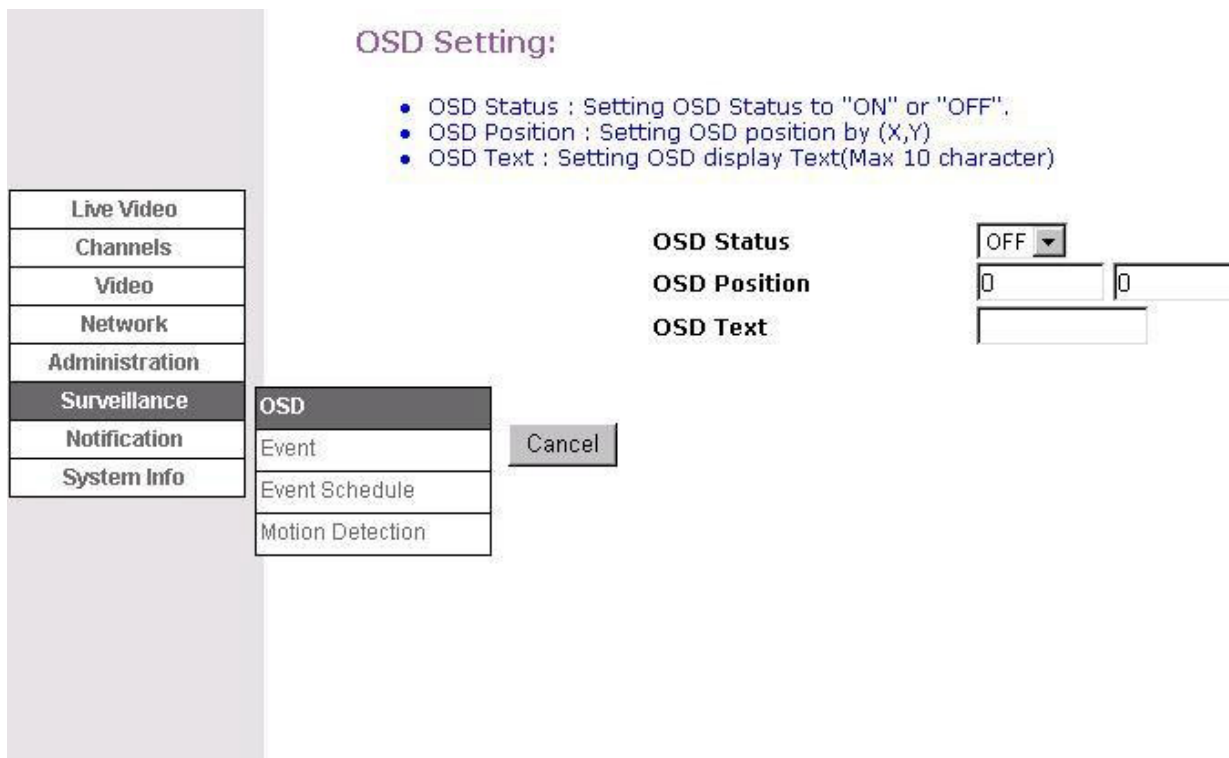


Figure 2-16

OSD Status : Enable or disable OSD

OSD Position : Input the X,Y axis to set the position

OSD Text : Set the display text

2-14. Event (in Surveillance subgroup)

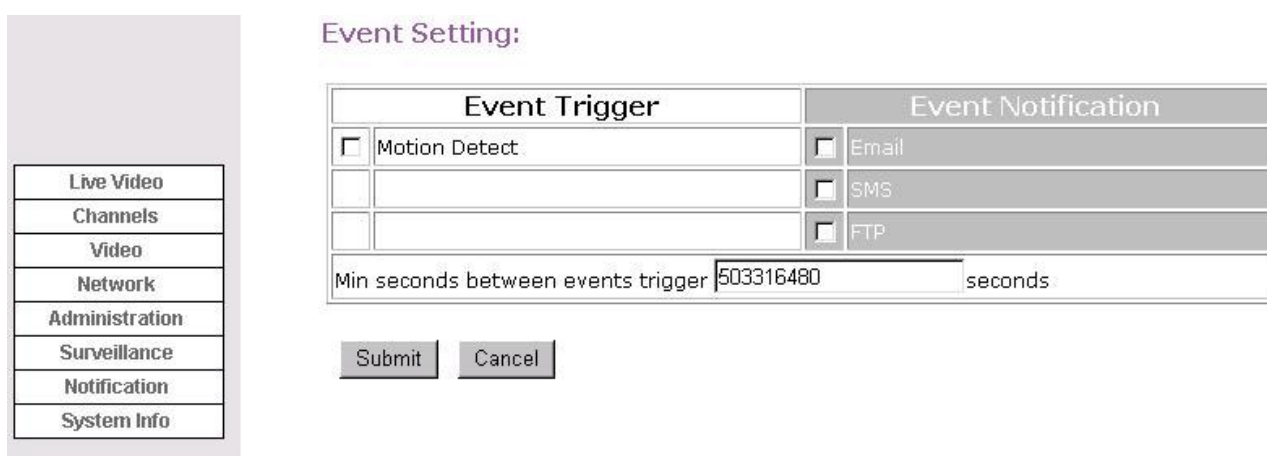


Figure 2-17

Check the item “Motion Detect” if you want to use that event trigger. Event Notification has 3 kinds of notification, that is, Email, SMS, and FTP. Check the item(s) if you want to use it.

Min Seconds between Event Trigger: Time between event trigger (unit : second)

2-15. Event Schedule (in Surveillance subgroup)

Event Schedule Setting :

Event Schedule :

	Enable	Begin			Day	End	
		Day	Hour	Minute		Hour	Minute
0	<input type="text" value="Disable"/>	<input type="text" value="SUN"/>	<input type="text" value="0"/>	<input type="text" value="0"/>	<input type="text" value="SUN"/>	<input type="text" value="0"/>	<input type="text" value="0"/>
1	<input type="text" value="Disable"/>	<input type="text" value="SUN"/>	<input type="text" value="0"/>	<input type="text" value="0"/>	<input type="text" value="SUN"/>	<input type="text" value="0"/>	<input type="text" value="0"/>
2	<input type="text" value="Disable"/>	<input type="text" value="SUN"/>	<input type="text" value="0"/>	<input type="text" value="0"/>	<input type="text" value="SUN"/>	<input type="text" value="0"/>	<input type="text" value="0"/>
OSD	<input type="text" value="Disable"/>	<input type="text" value="SUN"/>	<input type="text" value="0"/>	<input type="text" value="0"/>	<input type="text" value="SUN"/>	<input type="text" value="0"/>	<input type="text" value="0"/>
Event	<input type="text" value="Disable"/>	<input type="text" value="SUN"/>	<input type="text" value="0"/>	<input type="text" value="0"/>	<input type="text" value="SUN"/>	<input type="text" value="0"/>	<input type="text" value="0"/>
Event Schedule	<input type="text" value="Disable"/>	<input type="text" value="SUN"/>	<input type="text" value="0"/>	<input type="text" value="0"/>	<input type="text" value="SUN"/>	<input type="text" value="0"/>	<input type="text" value="0"/>
Motion Detection	<input type="text" value="Disable"/>	<input type="text" value="SUN"/>	<input type="text" value="0"/>	<input type="text" value="0"/>	<input type="text" value="SUN"/>	<input type="text" value="0"/>	<input type="text" value="0"/>
7	<input type="text" value="Disable"/>	<input type="text" value="SUN"/>	<input type="text" value="0"/>	<input type="text" value="0"/>	<input type="text" value="SUN"/>	<input type="text" value="0"/>	<input type="text" value="0"/>
8	<input type="text" value="Disable"/>	<input type="text" value="SUN"/>	<input type="text" value="0"/>	<input type="text" value="0"/>	<input type="text" value="SUN"/>	<input type="text" value="0"/>	<input type="text" value="0"/>

Figure 2-18

This device provides Auto Touring Schedule function so we can guard on specific position periodically. You can set all of these 16 Auto Touring Position (0 to 15) Enable/Disable, and set cruise begin time and cruise end time respectively.

2-16. Motion Detect (in Surveillance subgroup)

Motion Detection Setting:

Live Video	
Channels	
Video	
Network	
Administration	
Surveillance	OSD
Notification	Event
System Info	Event Schedule
	Motion Detection

Motion Detection : OFF	
<input checked="" type="radio"/> Motion 1	Enable : Enable Top : 75 Bottom : 132 Sensitivity : Midium Left : 123 Right : 207
<input type="radio"/> Motion 2	Enable : Disable Top : 66 Bottom : 144 Sensitivity : Lowest Left : 79 Right : 226
<input type="radio"/> Motion 3	Enable : Disable Top : 90 Bottom : 180 Sensitivity : Lowest Left : 44 Right : 122
Submit Cancel	

Figure 2-19

Motion Detect Setting: We can set 3 areas on one camera view, the 3 areas are characterized by Top, Bottom, Left, Right, input the value respectively, so we get a rectangle area that is on guard, but we can only set one area at one time. (That's why we use radio button.) (radio button is the button before the character Motion 1)

Enable/Disable is used to Enable/Disable Motion Detect of specific area. Sensitivity divided by 5 categories: Lowest, Low, Medium, High, and Super to accommodate to different environment. NOTE: If you want to set Motion Detect to take effect, Motion Detect must set to ON.

Sensitivity : Sensitivity of Motion Detect

2-17. SMTP (in Surveillance subgroup)

E-Mail:

Authentication : No

Sender : abc@hotmail.com

SMTP Server : hotmail.com

POP Server :

Username :

Password :

Receiver 1 : jason@hotmail.com

Subject : TRIGGER

Content : test

Attach Snapshot

Attach Snapshot

Attach Snapshot

Send a test E-mail

Submit Cancel

Figure 2-20

SMTP stands for Simple Mail Transfer Protocol. When you set notification to Email, you must input the necessary data here. The most important fields are SMTP Server, SMTP User, SMTP Password, From [Sender's Email], TO [Receiver1's Email], Subject, and Content.

2-18. SMS (in Surveillance subgroup)

SMS Setting:

- Min seconds between two SMS

SMS Provider : clickatell SMS Service

SMS Time : 0 seconds

SMS ID(app_id) :

SMS User Name :

Password :

SMS From Text :

SMS Text :

Submit Cancel

Figure 2-21

SMS stands for Short Message Service. When you set notification to SMS, you must input the necessary data here.

- SMS Provider : Choose one Short Message Service Supplier that you have applied.
- SMS Time : use default value.
- SMS ID (app_id) : keep it blank here.
- SMS User Name : Fill the account name of Short Message Service you have applied.
- SMS Password: : Fill the password of Short Message Service you have applied.
- SMS To: : The cell phone number you want to send Short Message.
- SMS From Text : The title of sender.
- SMS Text : The text of Short Message.

After fill in all these fields, click **Submit**.

2-19. FTP (in Surveillance subgroup)

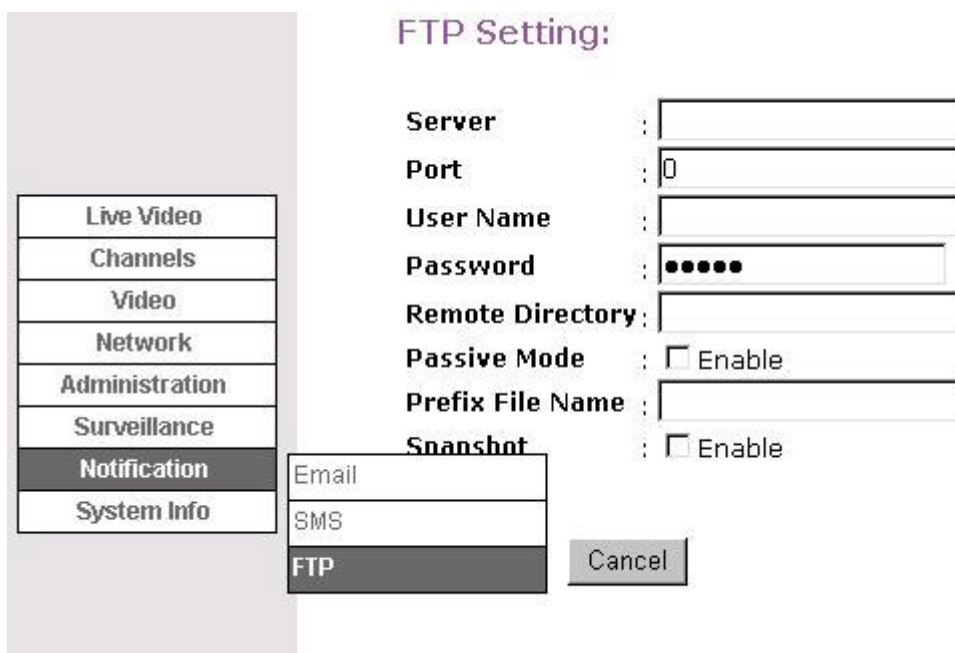


Figure 2-22

This machine can upload the predefined file to the external FTP server. When you set notification to FTP, you must input the necessary data here. This will upload the assigned message(s) to the FTP server.

Server: : FTP Server Address.

- Port: : The FTP port assigned by FTP Server.
- User Name: : User Account.
- Password: : User Password.
- Remote Directory: : The directory that FTP server assigned to store message.
- Prefix File Name: : The prefix text we set before the file name.

Ask the FTP server manager about the detail.

2-20. System Info

System Status:

Network Information:

- IP Address** : 192.168.1.7
- PPP IP Address** : 0.0.0.0
- Subnet Mask** : 255.255.255.0
- Gateway** : 192.168.1.1
- MAC Address** : 00-12-0e-59-be-79

Streaming Setting:

Video Setting:

- Frame Rate** : 30.00
- Bit Rate** : 1024
- Frame Size** : SMALL

Audio Setting:

- Audio Codec** : AMR 12.2kbps

Device Information:

- Firmware Ver.** : 1,0,0,2-1 client(s)
- Hardware Ver.** : r0e/r 3.4_32 - PN
- Build Number.** : r237-IPTV-3G-(0)
(Dec 5 2007 21:23:58)

System Information:

System up:
System up 2:20:15:3

Client IP(s):
IP [1]: No Connection

Connected Clients:
0

Figure 2-23

It shows system status, like IP Address, MAC Address, Frame Rate, Frame Size, Firmware versions, etc.